

Java with the NetBeans IDE

(2004.06.06)

Developed From

**An Introduction to Java Development with NetBeans IDE
A NetBeans IDE Project Basics Tutorial
by Dirk Schreckmann**

http://www.javaranch.com/newsletter/200310/NetBeans_IDE_Project_Basics_Printable.pdf

Downloading the SDK and JVM

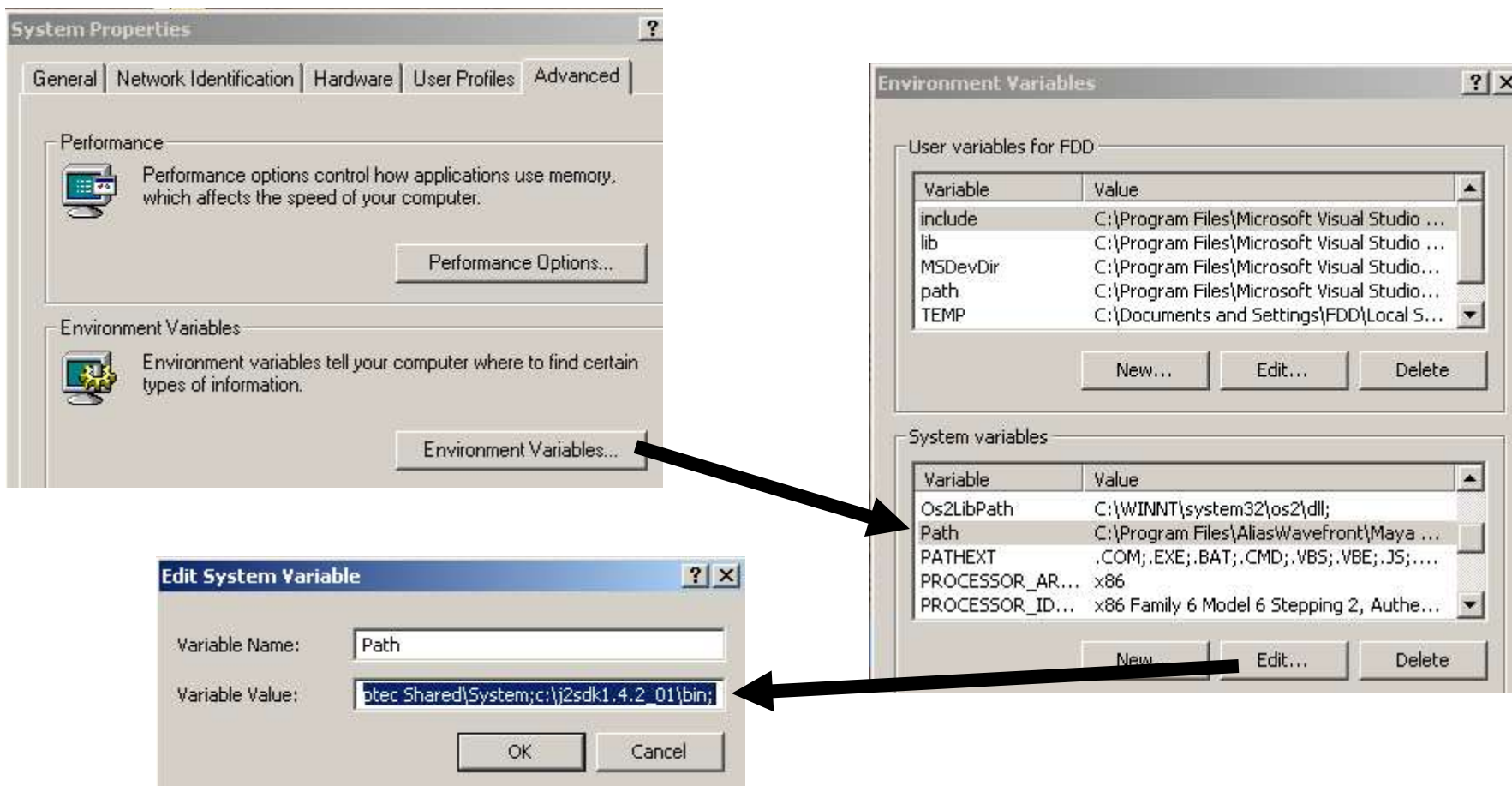
1. Go to:

`http://java.sun.com/j2se/1.4.2/download.html`

2. Select the SDK with NetBeans for your OS

Install the Java SDK (comes with JVM)

1. In Windows, run the executable, then make sure that the binaries are added to the search path:



2. In Redhat Linux, double click on the “.rpm” to install it, then make links to the basic Java binaries:

```
cd /usr/bin
```

```
ln -s /opt/j2sdk_nb/j2sdk1.4.2/bin/javac javac
```

```
ln -s /opt/j2sdk_nb/j2sdk1.4.2/bin/java java
```

```
ln -s /opt/j2sdk_nb/j2sdk1.4.2/bin/appletviewer appletviewer
```

or in any Linux or Unix, open the .shell file (example: .bash_profile on Red Hat Linux), modify path

```
PATH=$PATH:$HOME/bin:/opt/j2sdk_nb/j2skd1.4.2/bin:/opt/j2sdk_nb/netbeans3.5.1/bin:.
```

2. (continued)

access path for JDK on Solaris:

```
/pkgs2/j2sdk1.4.2/bin
```

access path for NetBeans on Solaris:

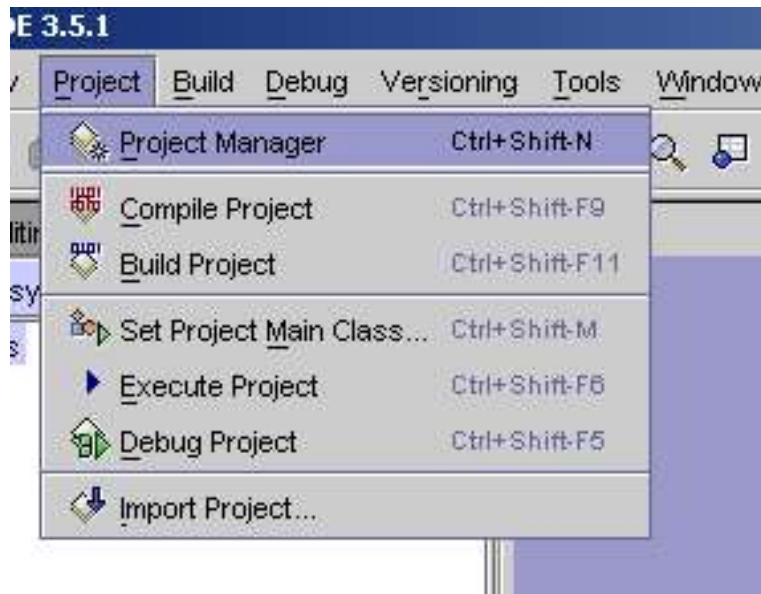
```
/pkgs2/netbeans3.5.1/bin/runide.sh
```

Basic steps for using the NetBeans IDE:

- 1. Create a new project**
- 2. Mount a directory - specify a location to save project files**
- 3. Add a new class to the project**
- 4. Compile and run a Java program**

1. Create a New Project

- **Start NetBeans**
- **Start a new project:**
Main Menu -> Project -> Project Manager
- **Click New**



- **Give the new project a name**

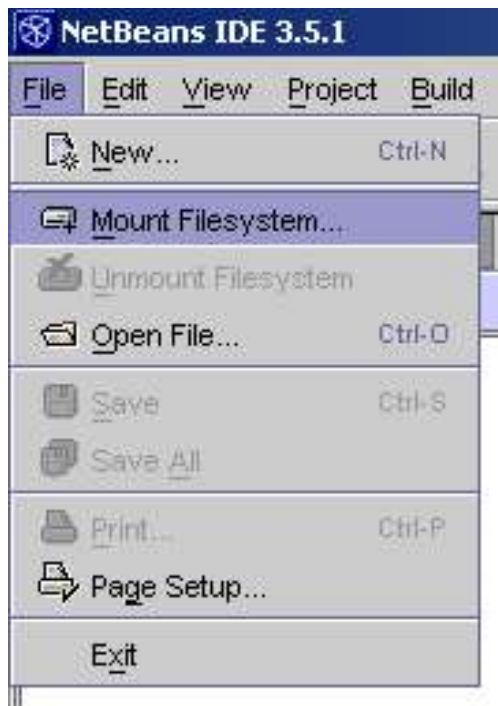


2. Mount a directory

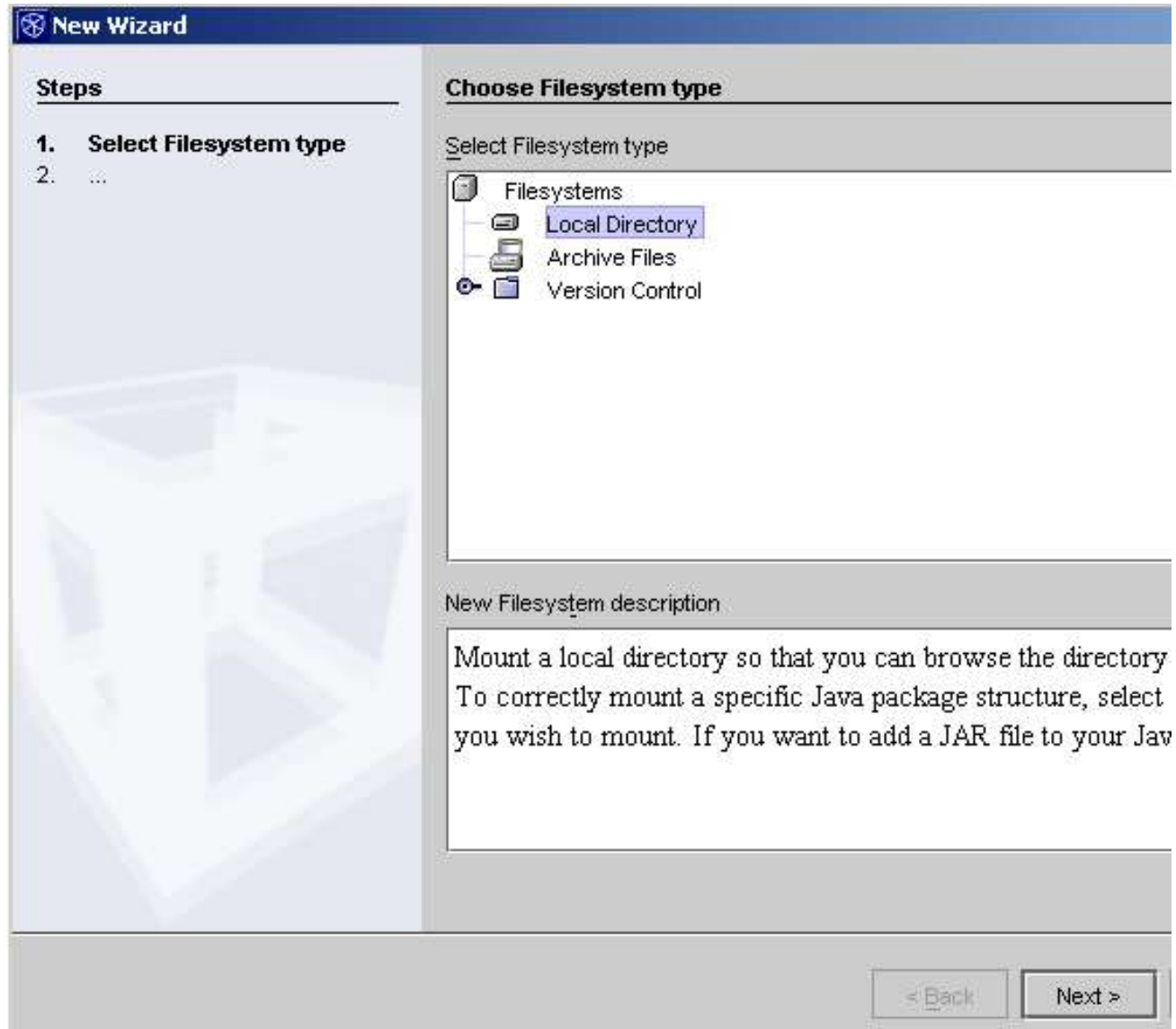
(specify a location to save project files)

- mount a directory as part of the project

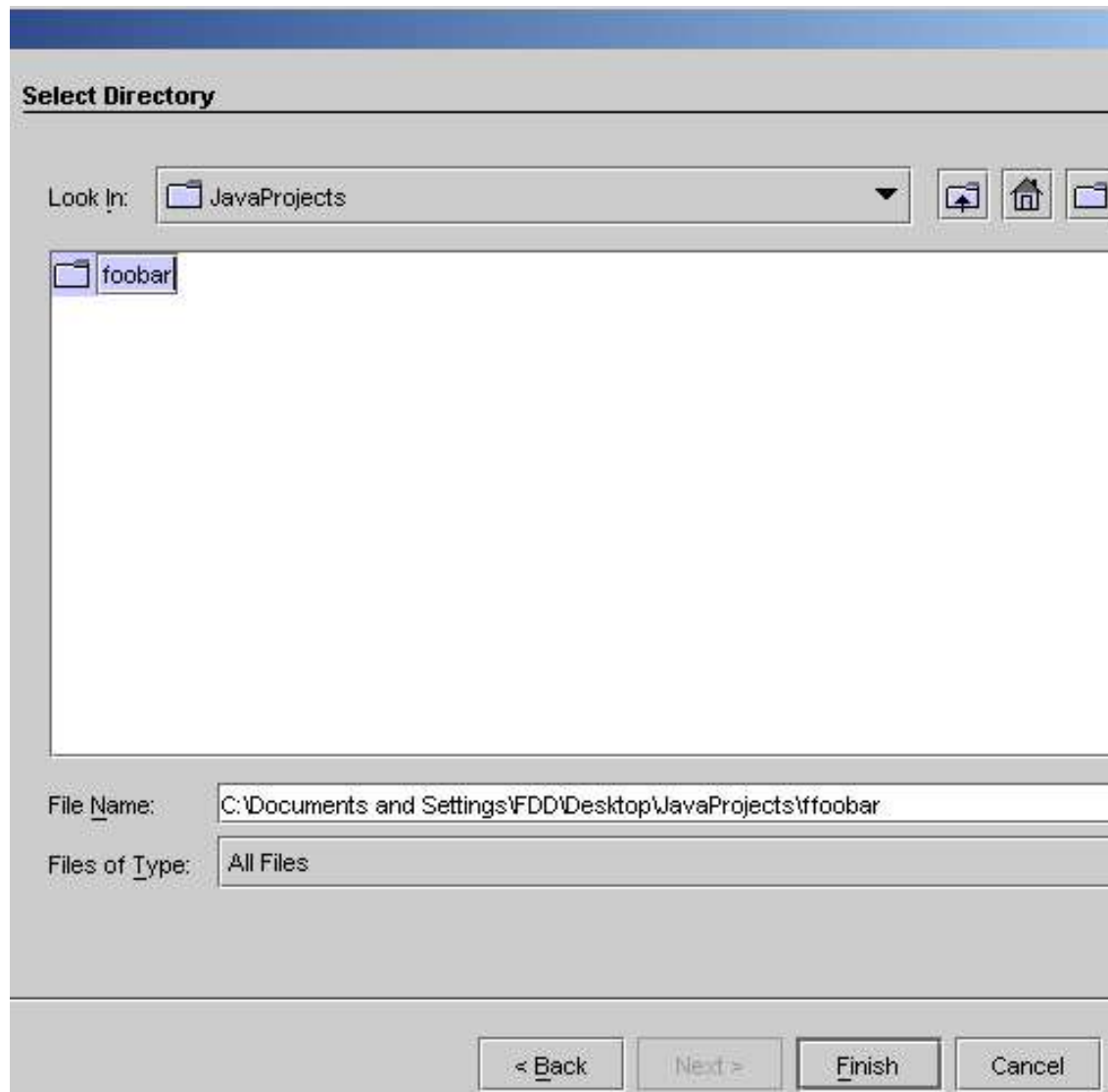
Main Menu -> File -> Mount Filesystem...



- **Under Filesystems, Select Local Directory. Click Next.**

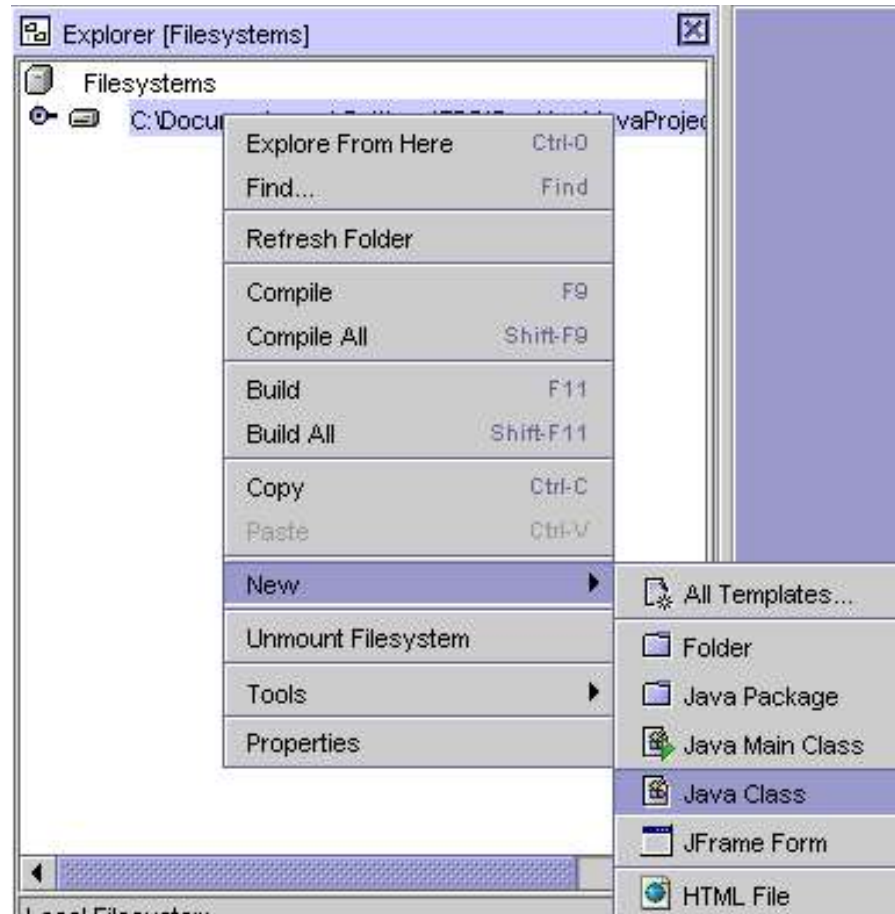


- **Select a directory to hold the project and click Finish. (You can make directories as you go.)**



3. Add a new class to the project

- RMB on a mounted project directory.
- Select New -> Java Class (or Java Main Class)



- **Name the class and click Finish**

New Object Name

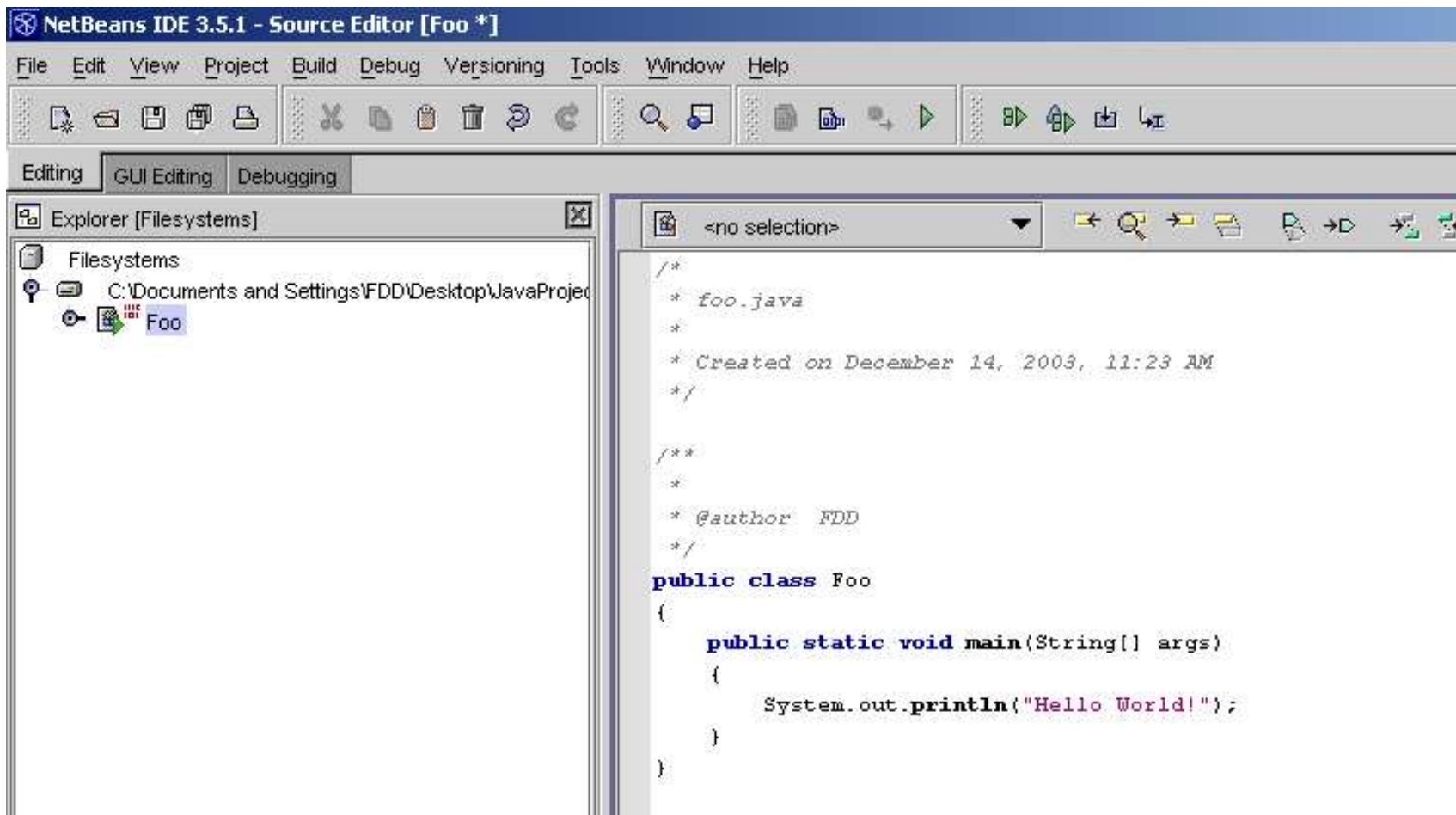
Name:

The file Foo.java already exists.

< Back Next > Finish

- **Edit the Java class as desired. Following is the code used in this tutorial.**

```
public class Foo
{
    public static void main(String[] args)
    {
        System.out.println("Hello World!");
    }
}
```

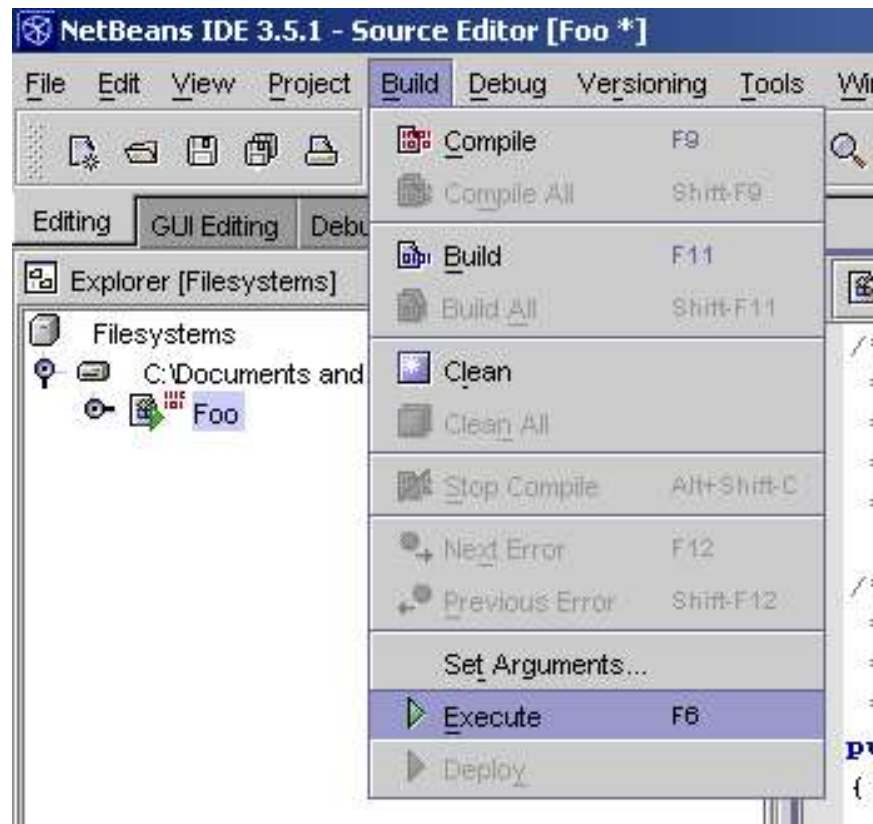


4. Compile and run a Java program

- In the Filesystems Explorer, assure that the main Java class is selected.



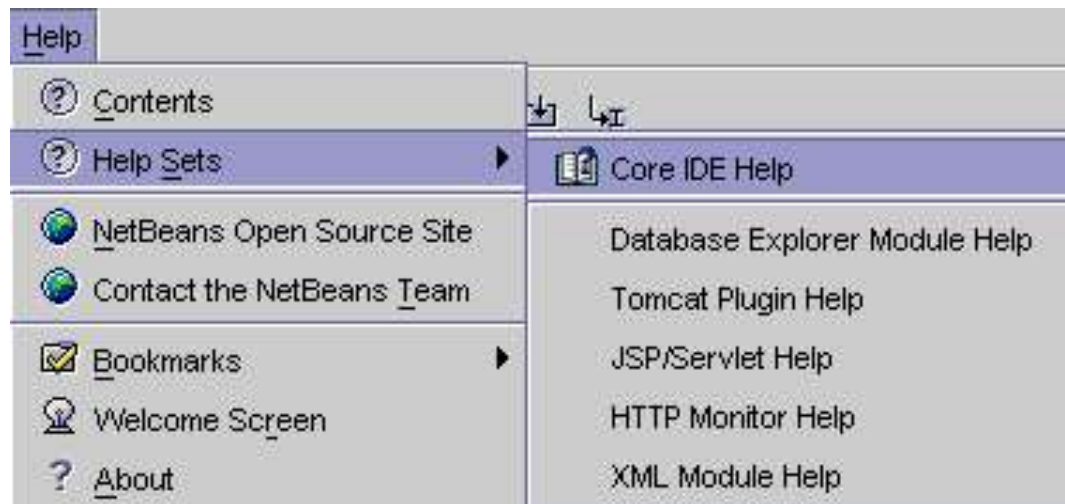
- **To compile and run the main Java class in one step:
Main Menu -> Build -> Execute.**



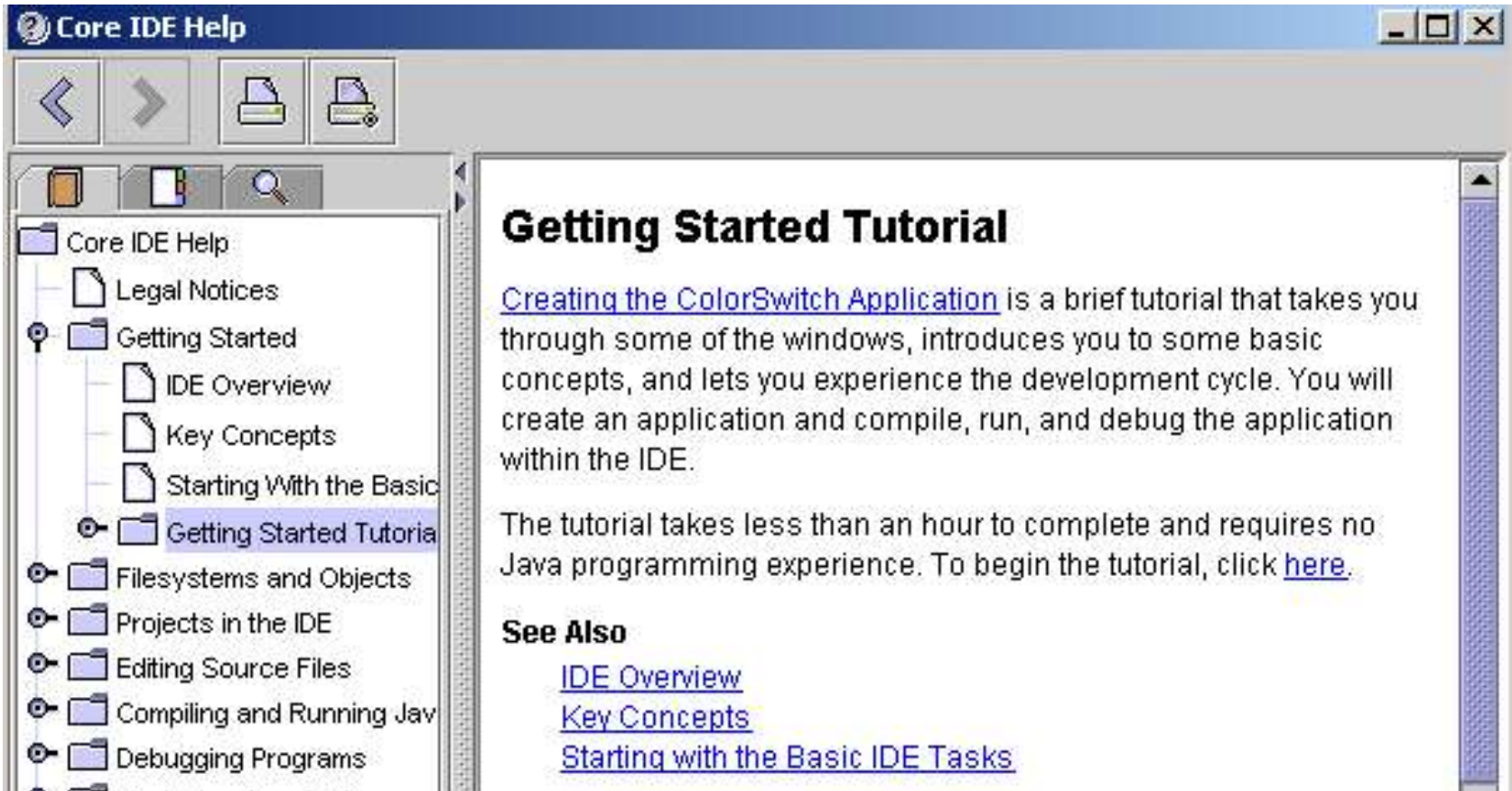
Note: To just compile a class, go to Main Menu -> Build -> Compile.

More Help: The Getting Started Tutorial

- **Select Help -> Help Sets -> Core IDE Help**



- **Under Getting Started, there is a Getting Started Tutorial**



- **If RMI, etc. updates are unavailable for the latest NetBeans when needed, the instructor will distribute them so you can manually add them**

